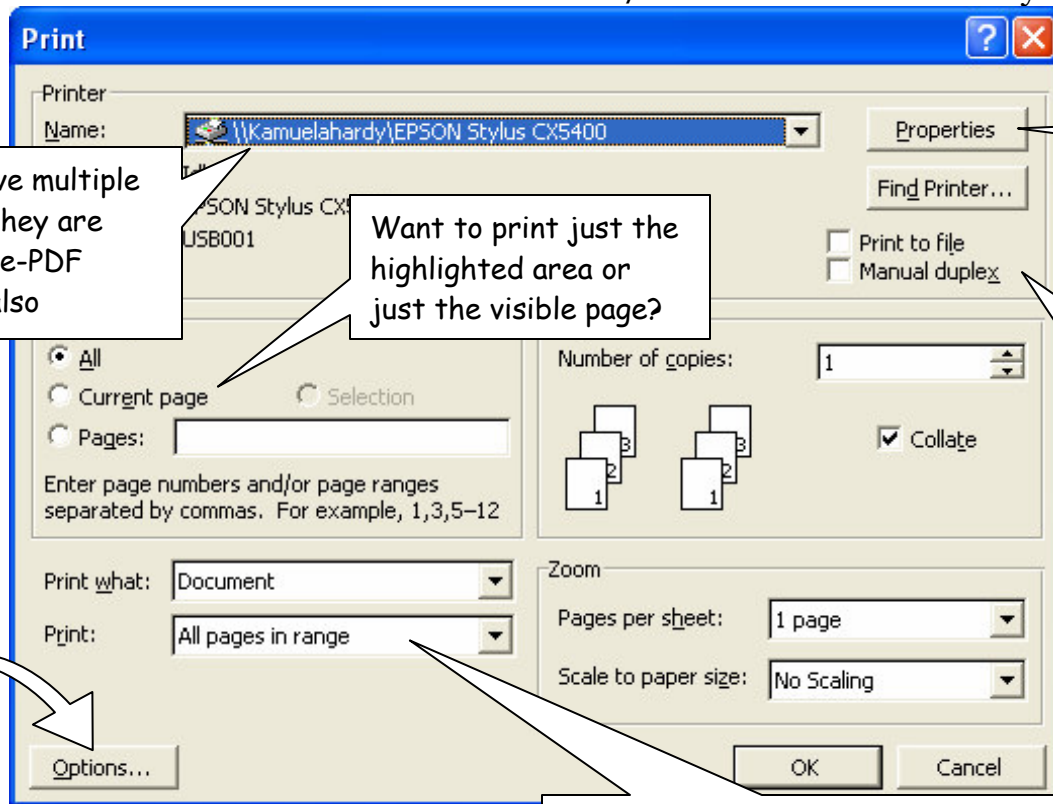


Clicking the Print button on toolbar and CTRL P will only provide the *default* printing options
Instead click on File/Print to select from many more printing options.



If you have multiple printers they are listed here-PDF printers also

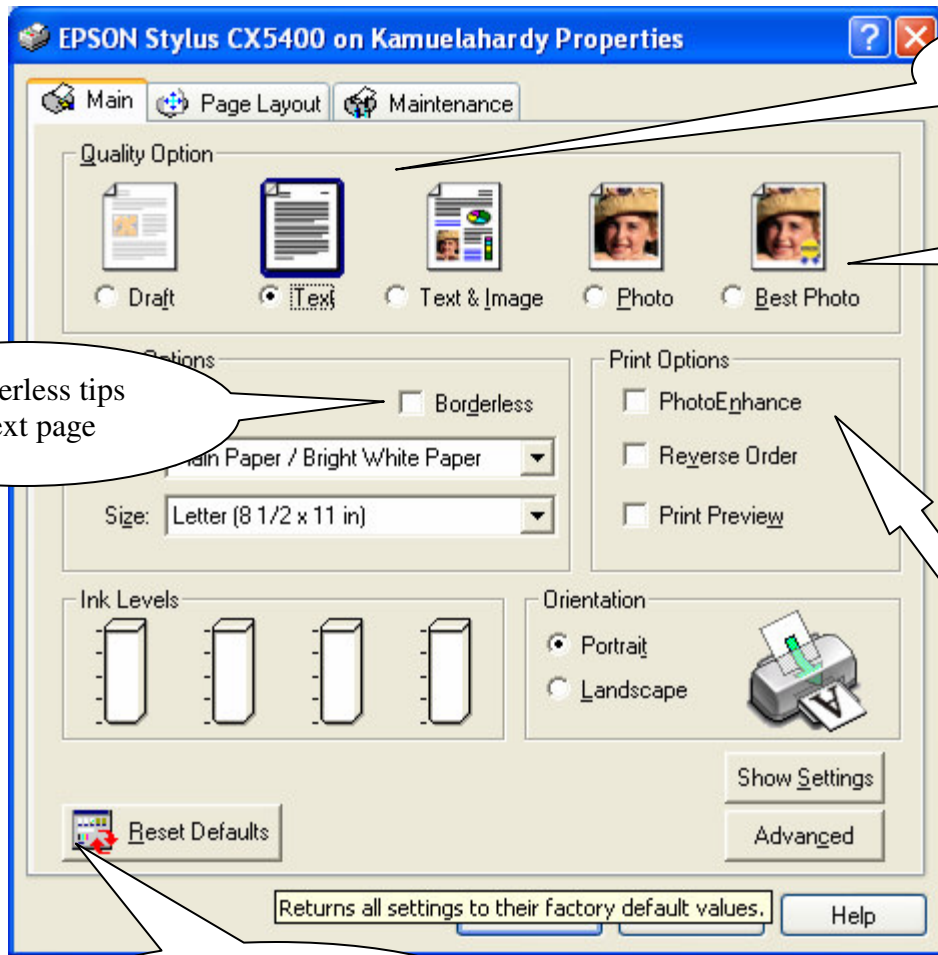
Want to print just the highlighted area or just the visible page?

Options specific to your printer are in here

Enables you to print the document on both sides of the paper if you don't have a duplex printer. After one side has printed, Microsoft Word prompts you to re-feed the paper.

Changes Word printing settings. If you want to change Windows printer settings, click Properties instead.

Want just the odd or even pages?



Fast & cheap or high quality?

The highest quality print usually combines all colors to create black!!

See borderless tips on the next page

Right click on any menu item to ask What's This?

Have you "fixed" one too many options?

Click the Advanced button to open the Advanced dialog box, where you can change detailed printer driver settings.

PhotoEnhance mode lets you select image-correction settings specially designed for scanned or digitally-captured photos.

Returns all settings to their factory default values.

Help

Show Settings

Advanced

Reset Defaults

Orientation

Portrait

Landscape

Ink Levels



Size: Letter (8 1/2 x 11 in)

Paper / Bright White Paper

Borderless

Draft

Text

Text & Image

Photo

Best Photo

Print Options

PhotoEnhance

Reverse Order

Print Preview

EPSON Stylus CX5400 on Kamuelahardy Properties

Main

Page Layout

Maintenance

Quality Option



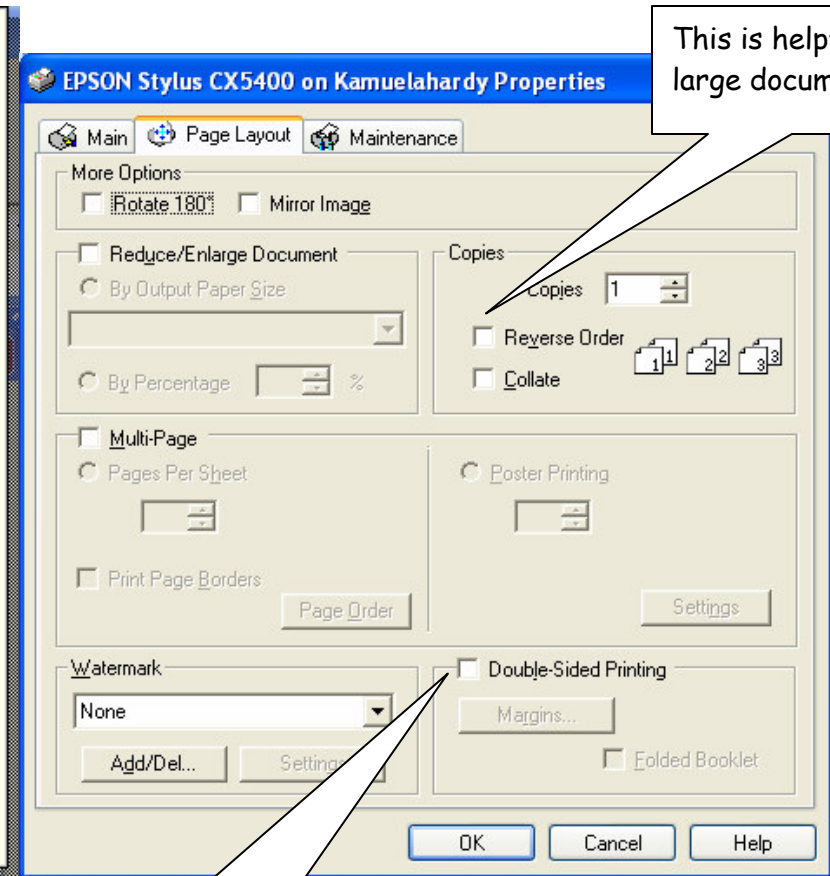
Prints using the entire area of the paper, allowing you to print documents with no margins and to produce "full-bleed" printouts of images.

When Sheet Feeder is selected as the Paper Source setting, this feature prints to all four edges of the paper. When Roll Paper is selected as the Paper Source setting, this feature prints to the right and left edges of the paper.

The media and paper source selection available for the Borderless feature varies by printer. See the printer's Reference Guide for details.

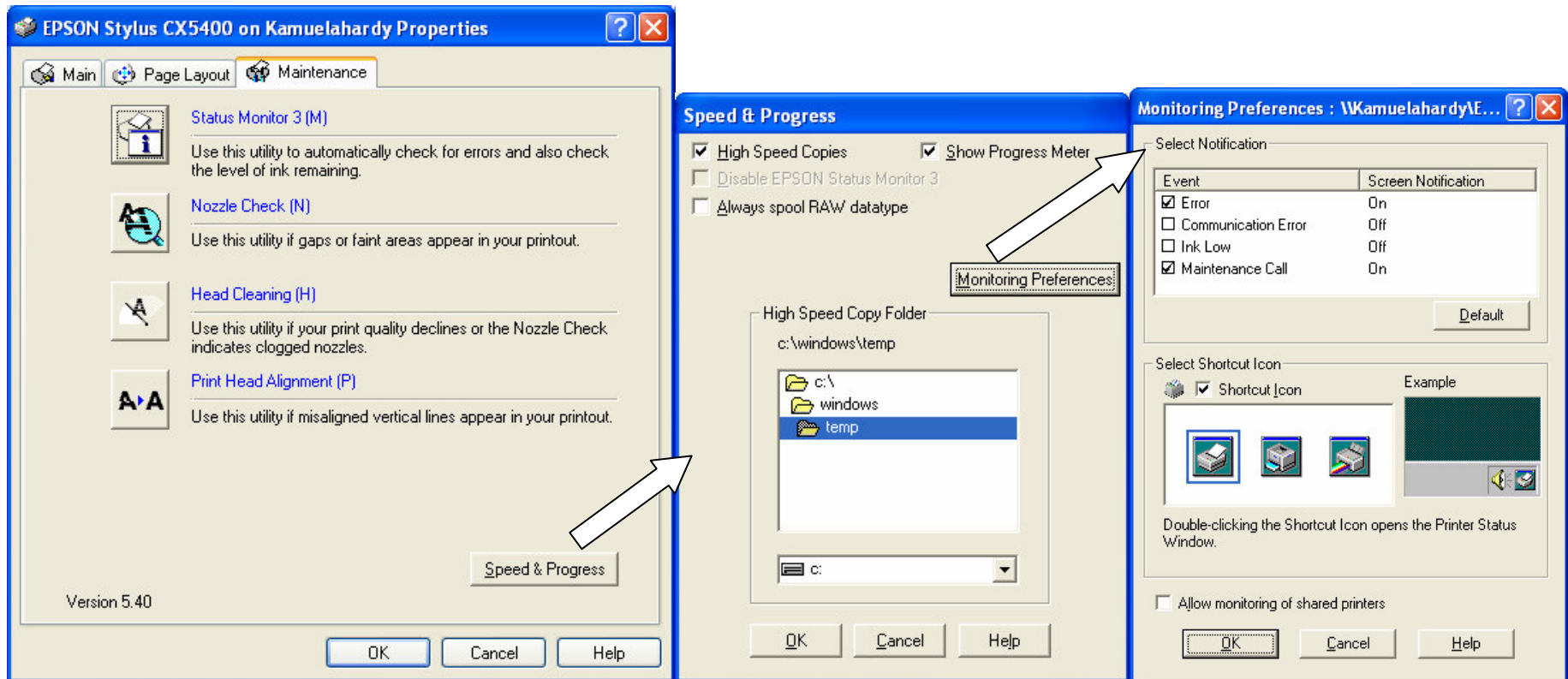
Note:

- *If your application has margin settings, make sure they are set to zero before printing.*
- *When using this feature with roll paper, you need to use your image-editing software to make the image 4 mm wider than the roll paper.*
- *Printing with this feature selected takes longer than for normal printing.*
- *When Sheet Feeder is selected as the Paper Source setting, or when Roll Paper is selected as the Paper Source setting and Cut Sheet Mode is selected as the Roll Paper Option, this feature enlarges the image to a size slightly larger than the paper size; therefore, the portion of the image that extends beyond the edges of the paper will not be printed.*
- *Print quality may decline or ink may smear in the top and bottom areas of the printout when printing on media other than that designated in the printer's Reference Guide. It is recommended that you print a single sheet to check quality before printing large jobs.*

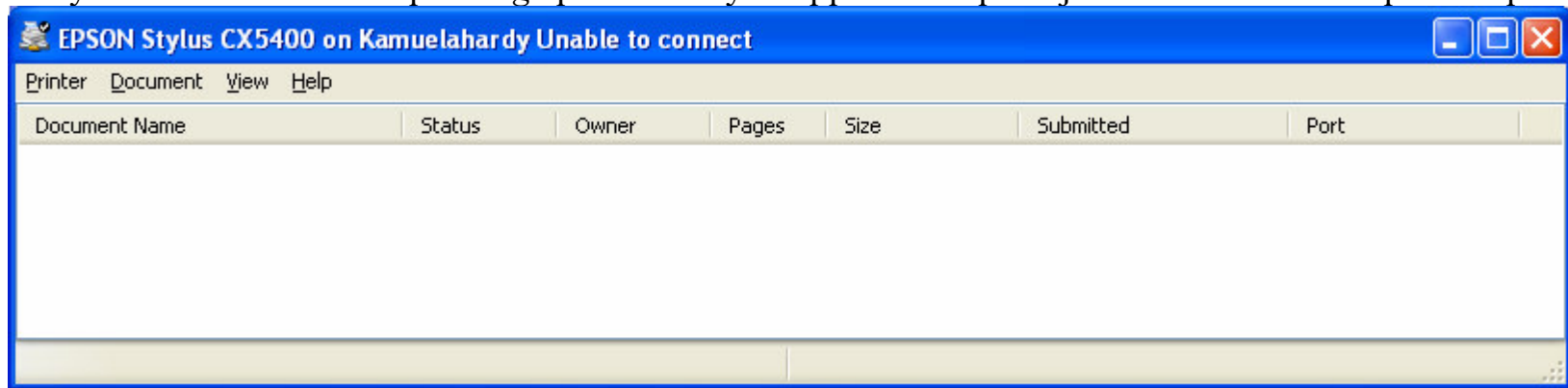


This is helpful for large documents.

This is great for condensing multi page documents



Once you have finalized the printing options and you approve the print job it is sent into the printer queue.



From here you can delete or re-order the print jobs. Sometimes if you delete a job from the queue you will also have to power the printer on/off to totally remove the job from memory.