

Setting Up Outlook Express

Modified from Microsoft Web Page

Before you can use Outlook Express to send and receive e-mail, you need to set up an account. You can have more than one account—for business, online shopping, and so on—and each person who uses your computer may have their own, completely separate account. Outlook Express gracefully handles it all.

Start Outlook Express

There are many ways to start Outlook Express, but here's a sure-fire way to find and start it.

1. Click the Start button.



2. Point to All Programs.

3. Click Outlook Express.

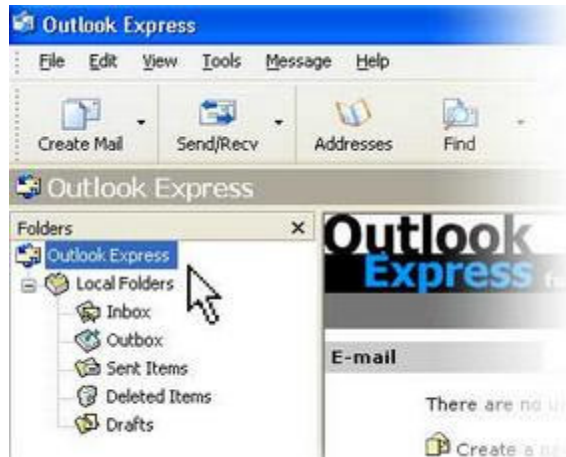
These first three steps are shown in the image on the left:

Opening Outlook Express from the Start menu

4. If asked whether you'd like to open this particular account automatically every time you start Outlook Express, click Yes (if you do) or No (if you don't).

If you don't want to be asked this question again, click to check the Always perform this check... box.

5. Check When Outlook Express starts go directly to my Inbox.



Outlook Express directs all incoming mail to the Inbox, so it makes sense to bypass this opening page.

If you don't see the list of folders and contacts on the left, click Layout on the View menu. Click Contacts and Folder List to check them, and then click OK.

Outlook Express list of folders

Quick start. You'll notice that when you use Outlook Express regularly, Windows XP will put the Outlook Express icon on the Start menu (along with other programs you've used recently). In that case, just click the Outlook Express icon in the Start menu to open the program.

Set Up an Outlook Express E-Mail Account

The Internet Connection Wizard makes short work of setting up your online mailbox by walking you through each step for every e-mail account you set up.

1. Before you get going, make sure you know your email address along with the following information.

(You may need to contact your ISP, Internet Service Provider, to get it.)

First, information about the e-mail servers:

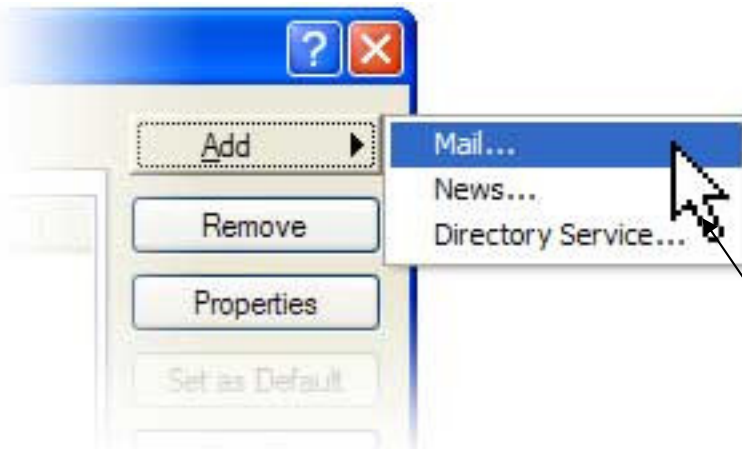
- The type of e-mail server you use: POP3 (most e-mail accounts), HTTP (such as Hotmail), or IMAP
- The name of the incoming e-mail server
- For POP3 and IMAP servers, the name of the outgoing e-mail server (generally SMTP)

Second, information about your account:

- Your account name and password
(For advice about making a secure password, read the Create strong passwords article. <http://www.microsoft.com/athome/security/privacy/password.msp>)
- Find out if your ISP requires you to use Secure Password Authentication (SPA) to access your e-mail account—yes or no is all that's required.

2. Start Outlook Express, and on the Tools menu, click Accounts.

If the Internet Connection Wizard starts up automatically, skip ahead to step 4.



3. Click Add, and then click Mail to open the Internet Connection Wizard.

Mail option from the Add button

4. On the Your Name page of the wizard, type your name **as you want it to appear to everyone who gets e-mail from you**, and then click NEXT.

(Most people use their full name, but you can use any name—even a nickname—that people will recognize.)

Setting Up Outlook Express

Modified from Microsoft Web Page

5. On the Internet Explorer Address page, type your e-mail address, and then click the NEXT button.

6. On the E-mail Server Names page, fill in the first block of information that you gathered from your ISP in step 1, and then click the NEXT button.

E-mail Server Names

My incoming mail server is a **POP3** server.

Incoming mail (POP3, IMAP or HTTP) server:
mail.cpandl.com

An SMTP server is the server that is used for your outgoing e-mail.

Outgoing mail (SMTP) server:
SMTP.cpandl.com

Internet Connection Wizard's E-mail Server Names

Note: If you chose HTTP as your incoming e-mail server—as for a Hotmail or MSN account—this wizard page changes slightly so you can identify your HTTP mail service provider.

7. On the Internet Mail Logon page, type your account name and password.

Internet Connection Wizard

Internet Mail Logon

Type the account name and password your Internet service provider

Account name: katiemw

Password: ●●●●●●●●

Remember password

If your Internet service provider requires you to use Secure Password (SPA) to access your mail account, select the Use On-Line Security

(Some ISP's, like Earthlink, require your full email address for the "Account Name" some ISP's just use the name only. Ask your ISP)

Internet Connection Wizard's Internet Mail Logon

Note: If you're concerned about break-ins to your e-mail, click to clear the check in the Remember Password box. You'll then be prompted for the password each time you send or retrieve mail.

8. Click Next, and then click Finish.

You're ready to send your first e-mail!

Unsure if your new e-mail account is working? Send an e-mail message to a friend. If they get the message, your account is ready to roll! But if you run into problems setting up your account, Outlook Express offers help. Search for troubleshooting topics from Contents and Index on the Help menu.

Set Up a Web-based E-Mail Account

The e-mail that you get in a Hotmail account and other Web-based accounts is not stored on your hard disk, but is kept on the account-provider's computer. That's what makes it possible to access your account from any computer in the world over the Internet. Here's how you set yourself up.

1. Go to the Web site and follow the setup instructions—for example, <http://www.hotmail.com/> for Hotmail.
2. Set up Outlook Express to use the account, by following the instructions above in Set up an Outlook Express e-mail account.

If you share your computer with someone else, take advantage of Fast User Switching. A feature of Windows XP, it lives up to its name by enabling you to switch among users on a single computer without closing any programs you are running or logging off.

- To turn Fast User Switching on, open User Accounts in Control Panel. Click Change the way users log on or off. Make sure the Use Fast User Switching box is checked.
- Then, to switch users, click Start, click Log off and then click Switch User. On the Welcome screen, click the user account you want to switch to. That's it!

Close Outlook Express

In closing, Outlook Express works just as all other Windows programs do.

- On the File menu, click Exit or the boxed X in the upper right corner.

Some Common ISP Server Settings in the Sedona Area:

ISP	Incoming Mail Server	Outgoing Mail Server
Aspect1	mail.aspect1.net	mail.aspect1.net
Commspeed	mail.commspeed.net	smpt.commspeed.net
Earthlink	pop.earthlink.net	smptauth.earthlink.net
ISP	mail.isp.com	mail.isp.com
WildApache	mail.wildapache.com	mail.wildapache.com

If your ISP is not listed, call them and ask for the server settings.

Note: AOL, MSN, JUNO use proprietary email programs and do not setup in Outlook Express.